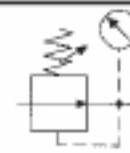


# 60 bar Pressure Regulator

## STANDARD



Pressure regulator (piston type). Port sizes G 1 to G 1 1/4. Secondary air exhaust (relieving) and almost complete independence of primary pressure are provided. Working pressure ranges: 0,5 to 12, 22, 35 and 50 bar. Gauge can be mounted on either side. Bracket mounting upon request. **Important:** Use of filter always recommended.

### Technical Data

Nominal rates of flow\*

Max. inlet pressure (P<sub>1</sub>)

Outlet pressure range\* (P<sub>2</sub>)

Operating temperature

Mounting position

Direction of flow

Material

Housing

\* measured at p<sub>1</sub>=20 bar, p<sub>2</sub>=10 bar and Δp=4 bar

### High Pressure Regulator

5000 NI/min

60 bar (PN 60)

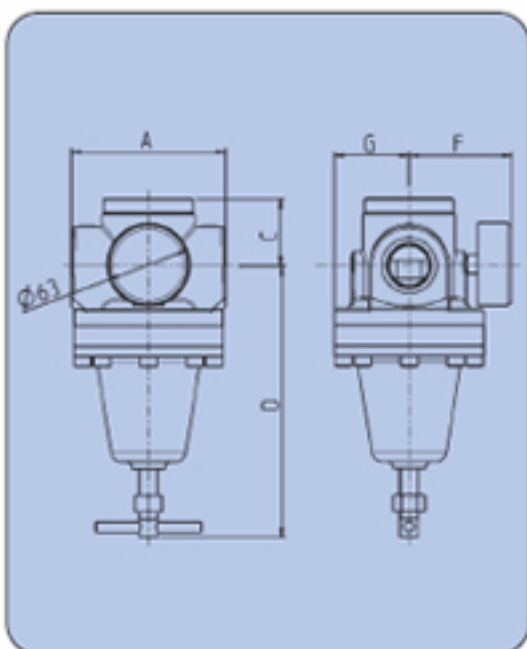
0,5 to 12, 22, 35 and 50 bar

-10°C to +90°C

any

arrow

brass



### Dimensions [mm]

| Size |     |
|------|-----|
| A    | 118 |
| C    | 51  |
| D    | 206 |
| F    | 80  |
| G    | 58  |

### Pressure Regulators 0,5 - 50 bar

| Size  | G 1     | G 1 1/4  |
|-------|---------|----------|
| Super | 302.396 | 302.3106 |

### special option - how to order:

302.xxxx

|   |                                  |                          |
|---|----------------------------------|--------------------------|
| 3 | - 0,5 - 12 bar                   | operating pressure range |
| 4 | - 1,0 - 22 bar                   |                          |
| 5 | - 2,0 - 35 bar                   |                          |
| 6 | - 3,0 - 50 bar                   |                          |
|   | - thread (9 = G 1, 10 = G 1 1/4) |                          |
| 3 | - with pressure gauge            |                          |
| 5 | - without pressure gauge         |                          |

For example:

302.394 - but without pressure gauge and 0,5 - 22 bar = 302.594

### Accessories

|                        |        |
|------------------------|--------|
| Bracket mounting steel | 302-19 |
|------------------------|--------|

### Main spare parts

|                          |       |
|--------------------------|-------|
| Valve complete with stem | 302-6 |
|--------------------------|-------|